

**Research on Tsunami Hazard
and Its Effects on Indonesia Coastal Region
(3 YEARS COOPERATION RESEARCH WITH JICA-JAPAN)**



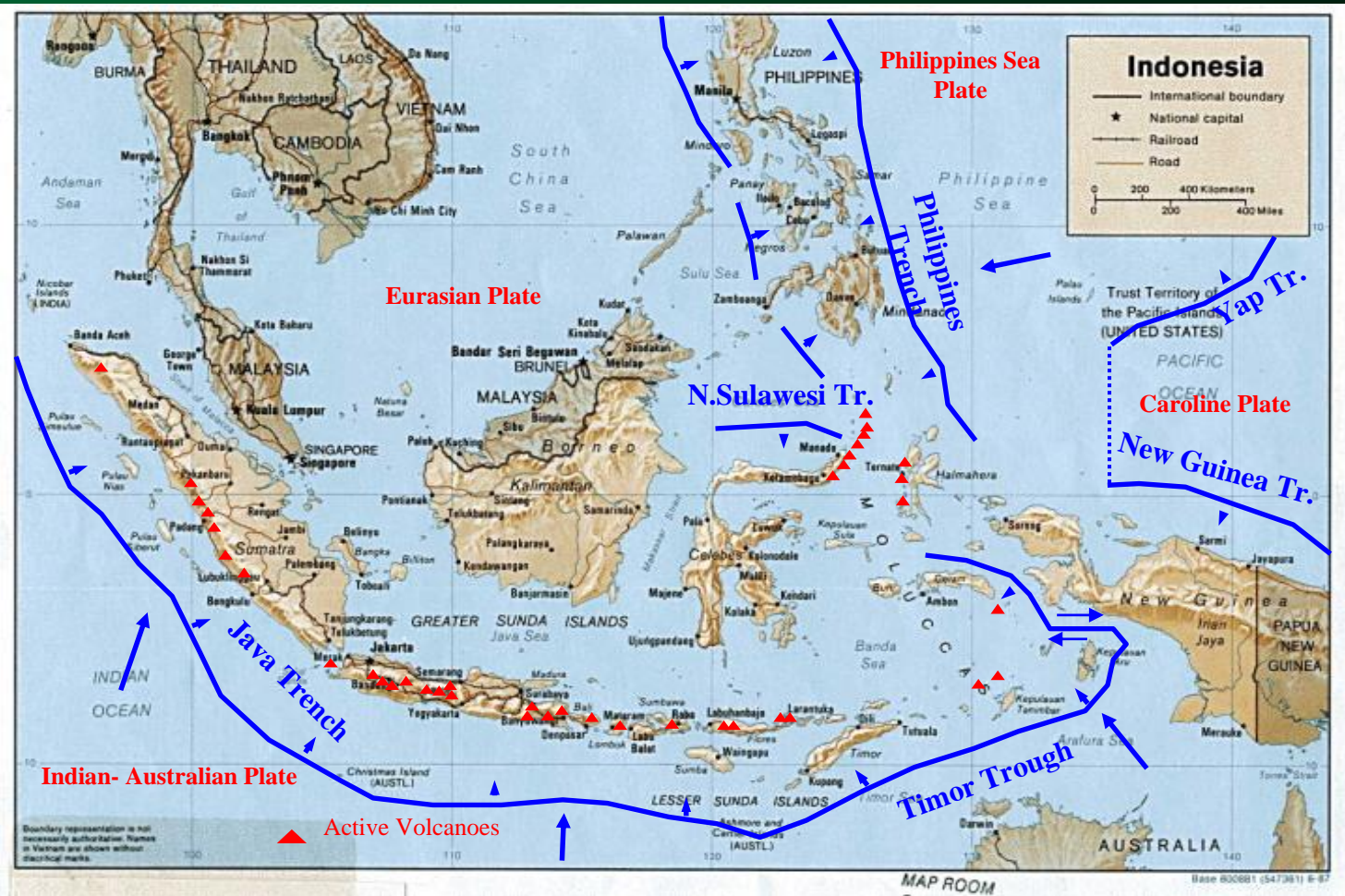
**Agency for the Assessment and Application of Technology
Coastal Dynamics Research Institute (BPDP)**

BPPT 2nd Building 11th Floor Room 1112, Jl.MH. Thamrin 8 Jakarta 10340

Telp. 021-316-9396 Fax. 021-316-9393

Jl. Grafika no. 2, Sekip Bulaksumur, Yogyakarta 55281

Telp: 0274-586-239, Fax: 0274-542-789



INDONESIA TECTONIC & PLATE BOUNDARIES

- Mangrove is heavily vegetated in South East Asian countries. 40% mangrove in the world is growing in this area
- Mangrove has important role as a habitat of marine ecology
- Previous studies concluded mangrove as a greenbelt protecting coastal area is effective to reduce tsunami energy

PICTURES OF MANGROVES (RHIZOPHORA SP. are courtesy pictures from several sources)



OVERALL GOAL:

Reduction of tsunami hazard (in Indonesia)

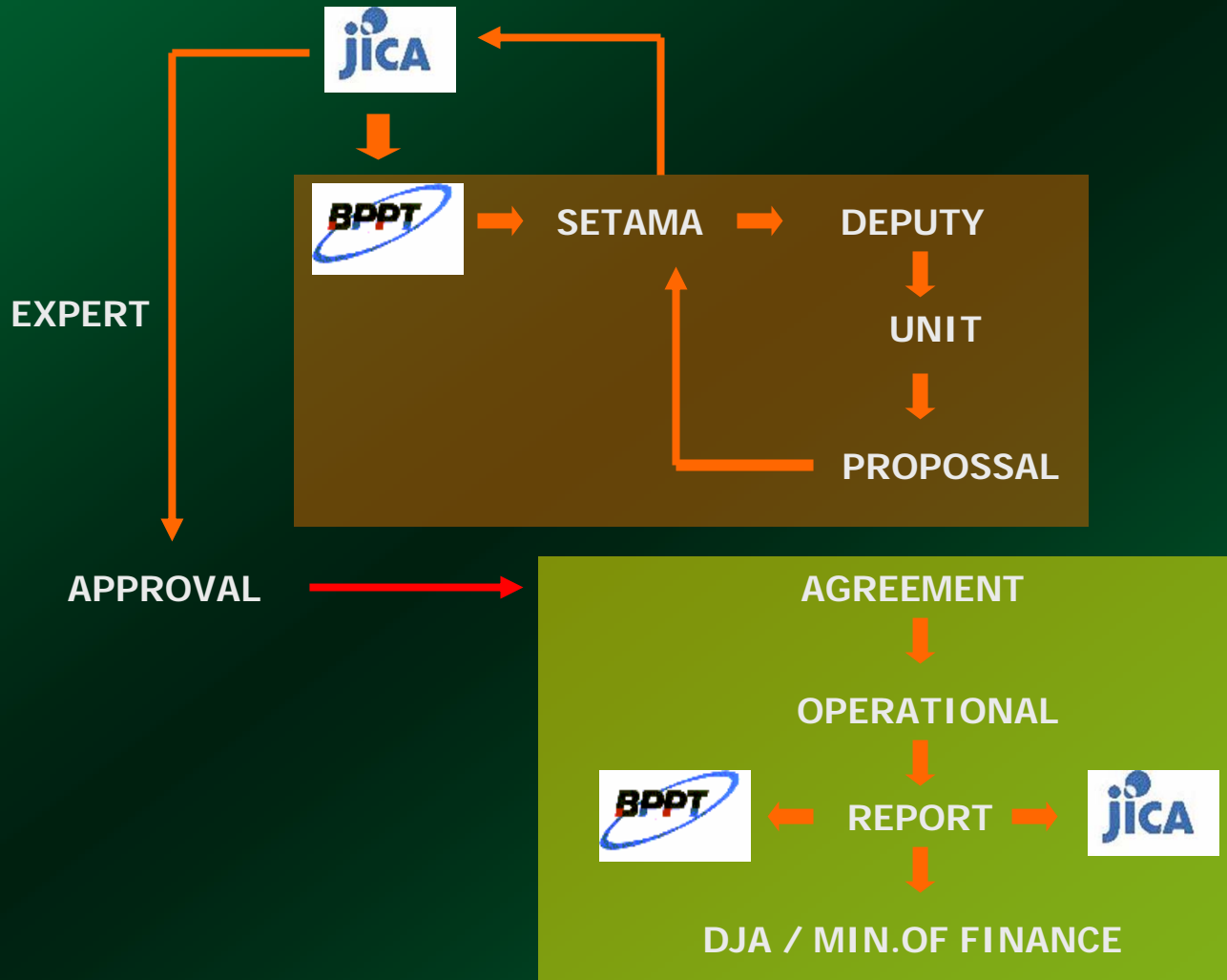
PROJECT PURPOSE:

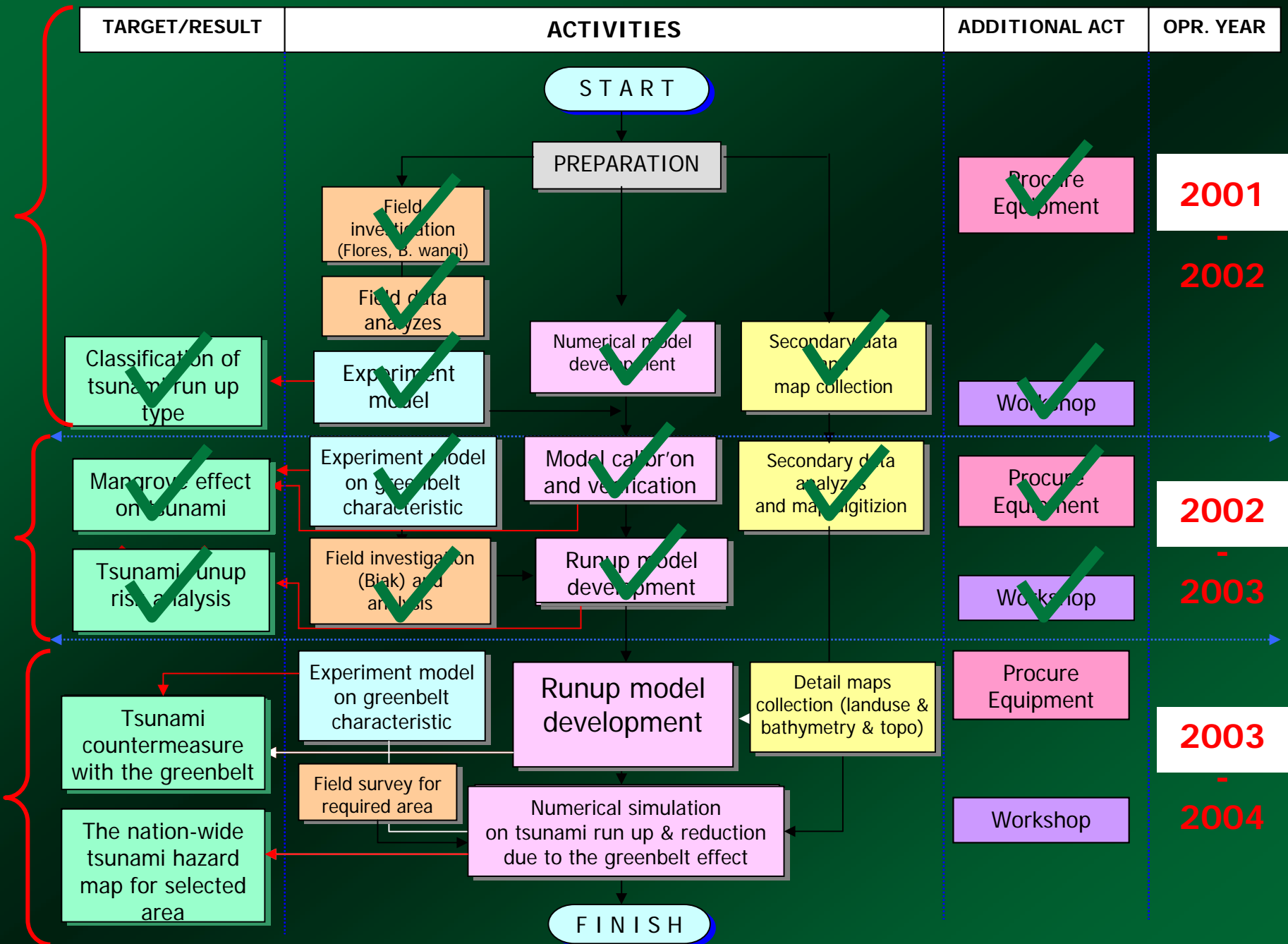
1. To make a nation-wide risk map of Tsunami hazard
2. To make an effective countermeasure for Tsunami disaster (in laboratory scale)

OUTPUTS:

1. Numerical Model of Tsunami run-up
2. Nation-wide risk map of Tsunami hazard
3. Experiment results on the effectiveness coastal protection against Tsunami

GRANT SCHEME FLOW CHART





Stakeholders

- I. Ministry of Marine and Fisheries
- II. Meteorology and Geophysics Agency
- III. Ministry of Settlement and Area Infrastructure
- IV. Agency of National Survey and Mapping Coordination
- V. Universities
- VI. Local Government

Activities Results

Field Investigation and Data Collection :

Relocation of residents to secure areas inside the land is usually ineffective due to the following reasons:

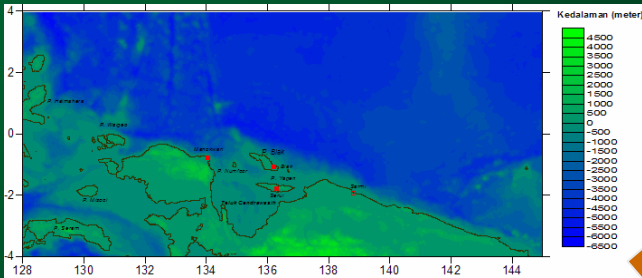
- The residents have been quite familiar only with fisheries livelihood.
- There is no land to cultivate in the relocation area, and is not easy to find a job inside the land.
- They believe that tsunami will not come in the near future.
- In general, they are willing to move the living area some distance from the beach, but with additional condition of secure facilities for anchoring the boats and fast access to this facility from living area.



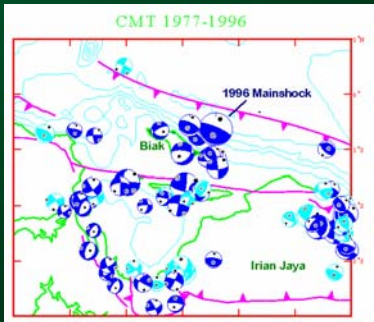


NUMERICAL MODEL OF TSUNAMI

3. Field Investigation (ITST)

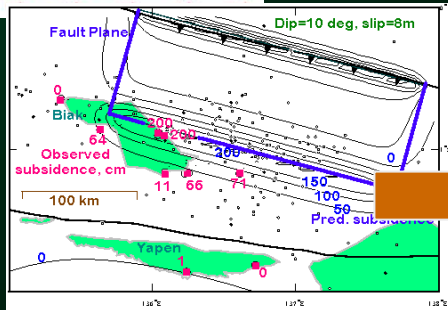


1. Bathymetric map (ETOPO2)



Model Design of Biak Tsunami 1996

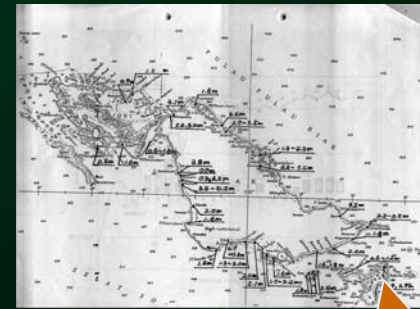
Batas Model	Utara : 4° Selatan : -4° Barat : 128° Timur : 145°
Jumlah grid	511 x 241
Ukuran Grid (dx = dy)	3700 meter
Langkah Waktu (dt)	3 detik
Lama simulasi	5 jam



2. Tsunami source (Harvard CMT)

No	Referensi	M _w	Fault Length (m)	Fault Width (m)	Strike (°)	Dip (°)	Slip (°)	Dislocation (m)	Depth (m)
1	Harvard quick CMT	8.2	18 x 10 ⁴	50 x 10 ³	27	60	99	11.217	15x10 ³

Fault Parameter of Tsunami Biak 1996

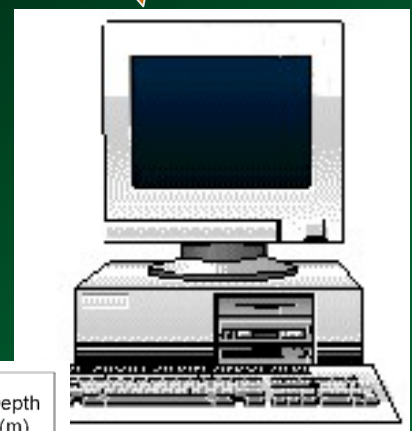


Daftar Berandaing Ciri 3. Informasi. Secara detail for field advice and detailed report
 Berandaing Model Sheet of Pulau-Tan. Paper

Table 1. 1996 BIAK TAYAN TIDAMANE SURVEYING RESULTS (Tsunami wave height)

No.	Region	Place	Location	Height(m)
1	BIAK	KERUMU	136 02 07 20 00 00 10 10	2.37
2	BIAK	KERUMU	136 02 07 20 00 00 10 10	2.34
3	BIAK	KERUMU	136 02 07 20 00 00 10 10	2.47
4	BIAK	KERUMU	136 02 07 20 00 00 10 10	2.2
5	BIAK	KERUMU	136 02 07 20 00 00 10 10	2.39
6	BIAK	KERUMU	136 02 07 20 00 00 10 10	2.31
7	BIAK	KERUMU	136 02 07 20 00 00 10 10	2.75
8	BIAK	KERUMU	136 02 07 20 00 00 10 10	2.7
9	BIAK	KERUMU	136 02 07 20 00 00 10 10	2.3
10	BIAK	KERUMU	136 02 07 20 00 00 10 10	2.36
11	BIAK	KERUMU	136 02 07 20 00 00 10 10	2.32
12	BIAK	KERUMU	136 02 07 20 00 00 10 10	2.33
13	BIAK	KERUMU	136 02 07 20 00 00 10 10	2.27
14	BIAK	KERUMU	136 02 07 20 00 00 10 10	2.3
15	BIAK	KERUMU	136 02 07 20 00 00 10 10	2.34
16	BIAK	KERUMU	136 02 07 20 00 00 10 10	2.31
17	BIAK	KERUMU	136 02 07 20 00 00 10 10	2.3
18	BIAK	KERUMU	136 02 07 20 00 00 10 10	2.3
19	BIAK	KERUMU	136 02 07 20 00 00 10 10	2.3
20	BIAK	KERUMU	136 02 07 20 00 00 10 10	2.3
21	BIAK	KERUMU	136 02 07 20 00 00 10 10	2.3
22	BIAK	KERUMU	136 02 07 20 00 00 10 10	2.3
23	BIAK	KERUMU	136 02 07 20 00 00 10 10	2.3
24	BIAK	KERUMU	136 02 07 20 00 00 10 10	2.3
25	BIAK	KERUMU	136 02 07 20 00 00 10 10	2.3
26	BIAK	KERUMU	136 02 07 20 00 00 10 10	2.3
27	BIAK	KERUMU	136 02 07 20 00 00 10 10	2.3
28	BIAK	KERUMU	136 02 07 20 00 00 10 10	2.3
29	BIAK	KERUMU	136 02 07 20 00 00 10 10	2.3
30	BIAK	KERUMU	136 02 07 20 00 00 10 10	2.3
31	BIAK	KERUMU	136 02 07 20 00 00 10 10	2.3
32	BIAK	KERUMU	136 02 07 20 00 00 10 10	2.3
33	BIAK	KERUMU	136 02 07 20 00 00 10 10	2.3
34	BIAK	KERUMU	136 02 07 20 00 00 10 10	2.3
35	BIAK	KERUMU	136 02 07 20 00 00 10 10	2.3
36	BIAK	KERUMU	136 02 07 20 00 00 10 10	2.3
37	BIAK	KERUMU	136 02 07 20 00 00 10 10	2.3
38	BIAK	KERUMU	136 02 07 20 00 00 10 10	2.3
39	BIAK	KERUMU	136 02 07 20 00 00 10 10	2.3
40	BIAK	KERUMU	136 02 07 20 00 00 10 10	2.3
41	BIAK	KERUMU	136 02 07 20 00 00 10 10	2.3
42	BIAK	KERUMU	136 02 07 20 00 00 10 10	2.3
43	BIAK	KERUMU	136 02 07 20 00 00 10 10	2.3
44	BIAK	KERUMU	136 02 07 20 00 00 10 10	2.3
45	BIAK	KERUMU	136 02 07 20 00 00 10 10	2.3
46	BIAK	KERUMU	136 02 07 20 00 00 10 10	2.3
47	BIAK	KERUMU	136 02 07 20 00 00 10 10	2.3
48	BIAK	KERUMU	136 02 07 20 00 00 10 10	2.3
49	BIAK	KERUMU	136 02 07 20 00 00 10 10	2.3
50	BIAK	KERUMU	136 02 07 20 00 00 10 10	2.3

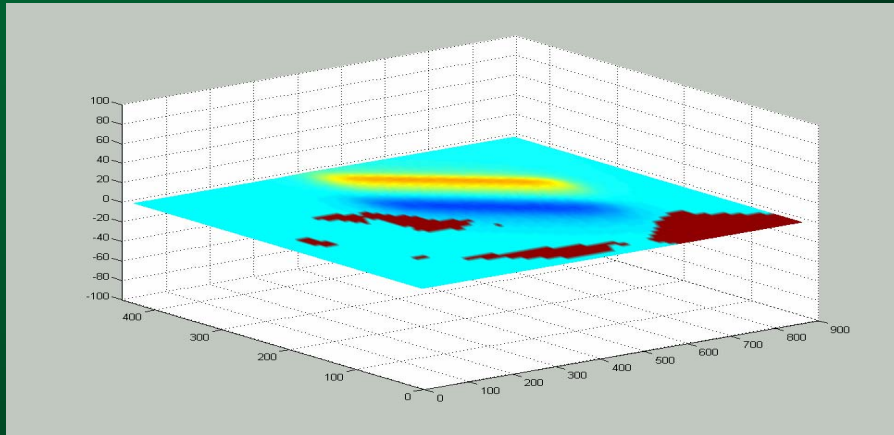
Verification



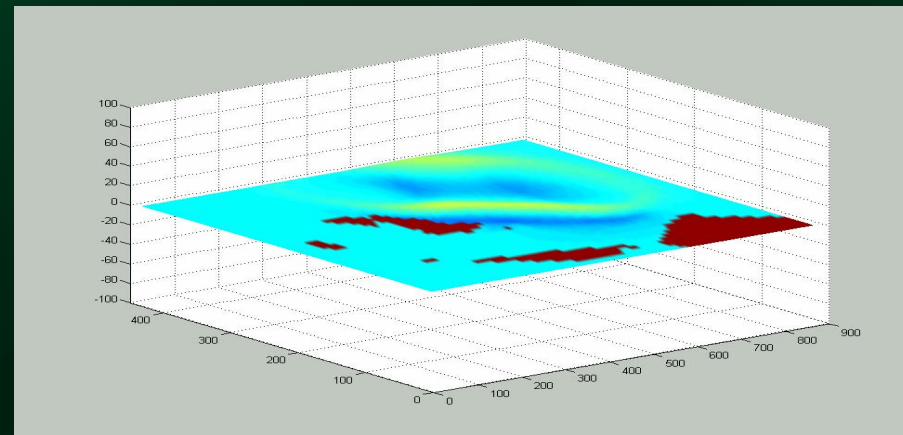
Simulation

Activities Results

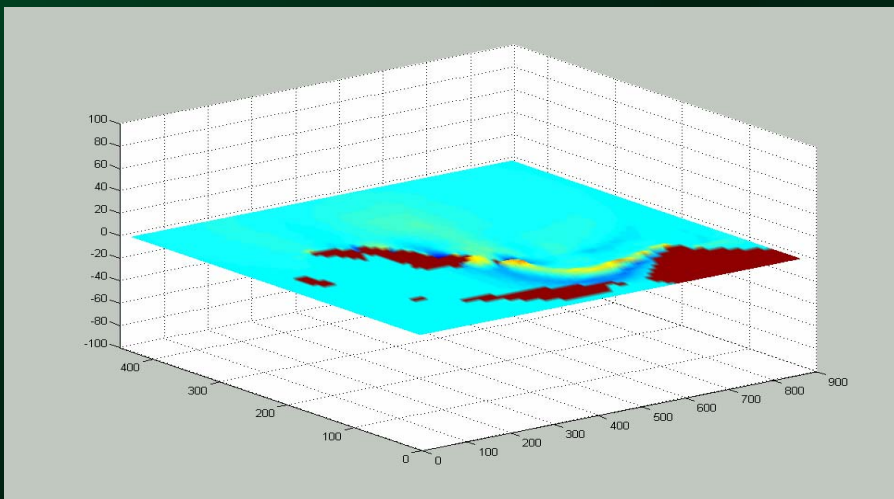
Numerical simulation :



Biak tsunami - wave propagation at $t = 0$



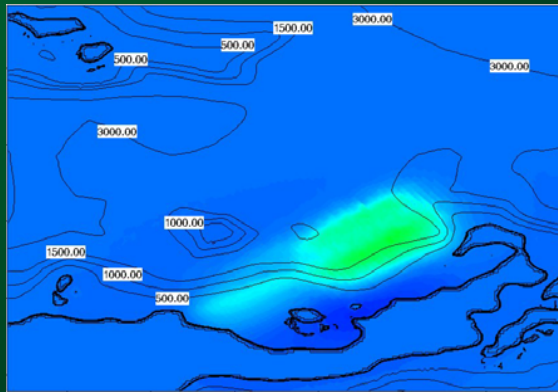
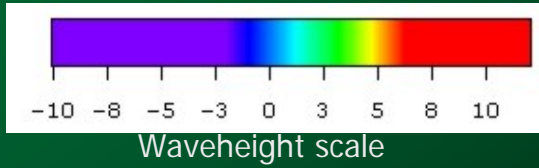
Biak tsunami - wave propagation at $t = 5$ min



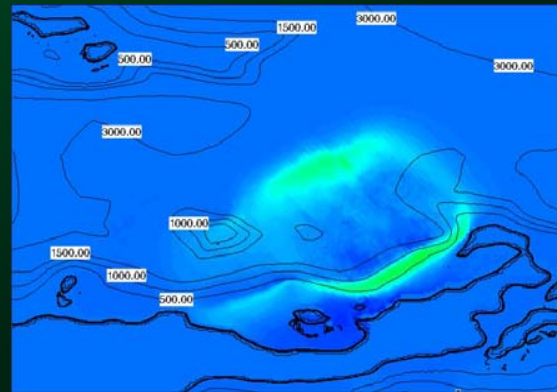
Biak tsunami - wave propagation at $t = 20$ min

Activities Results

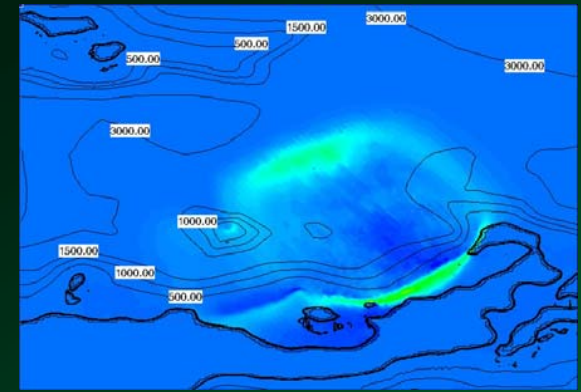
Numerical simulation :



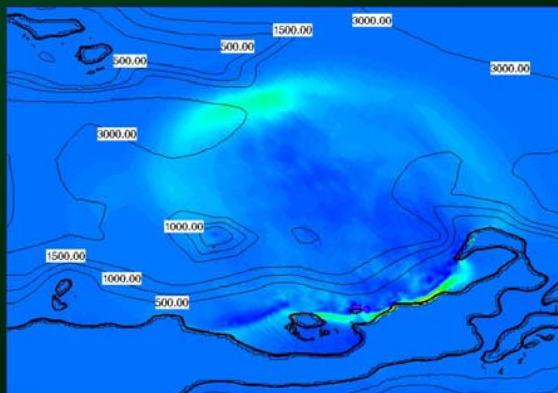
1 min



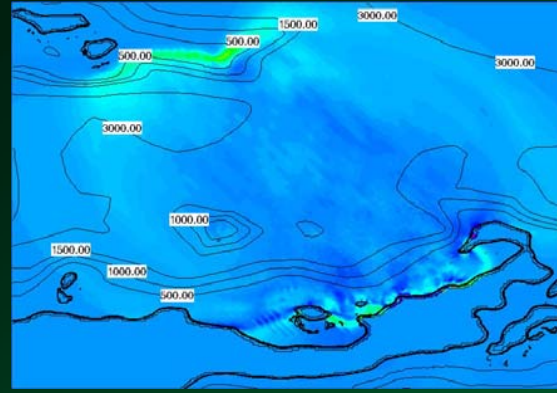
4 min



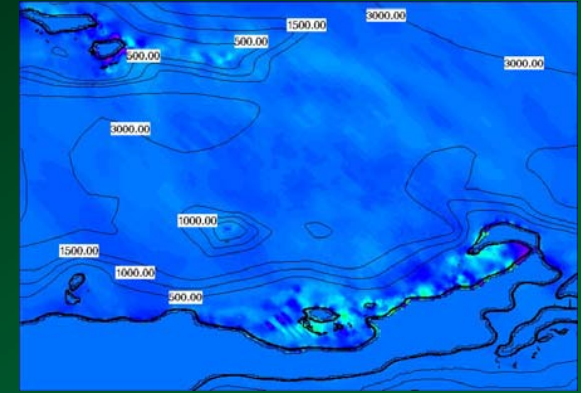
6 min



10 min



15 min

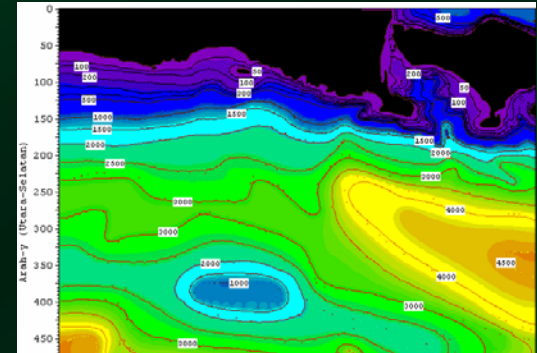
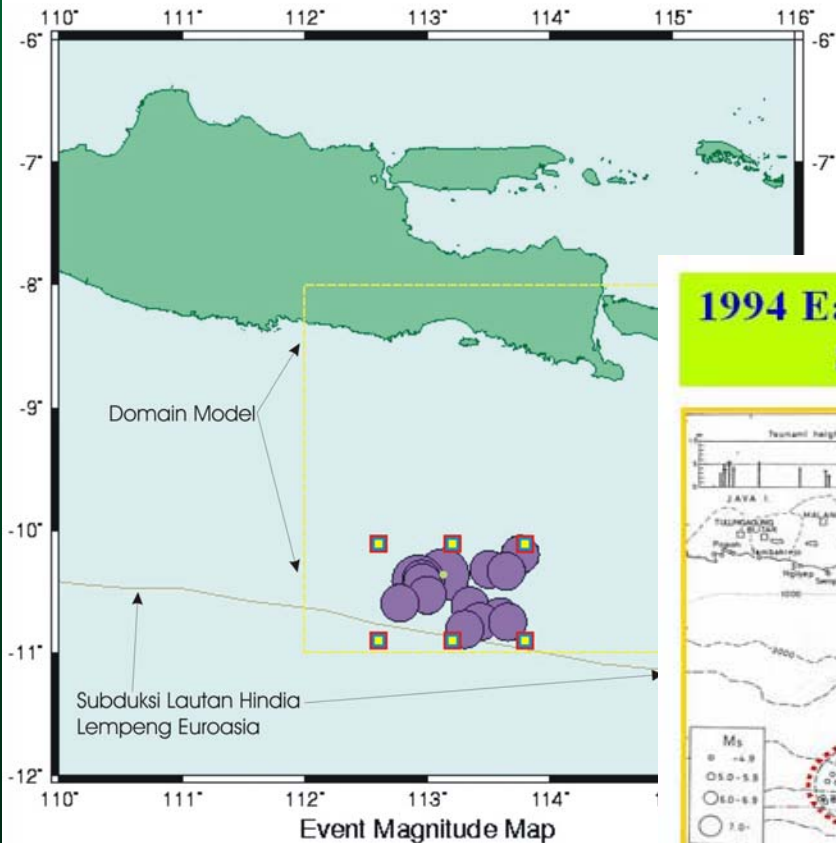


50 min

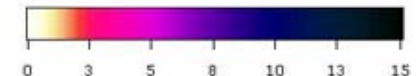
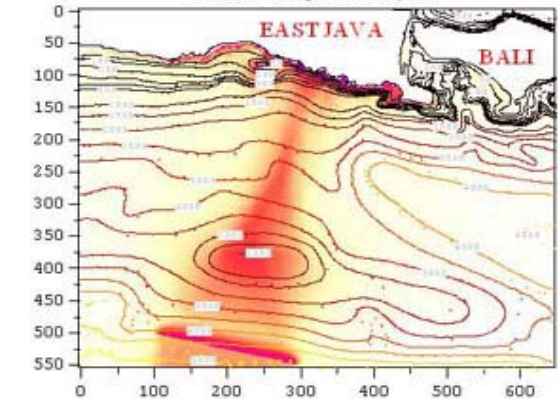
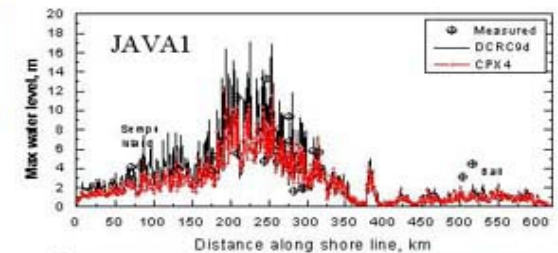
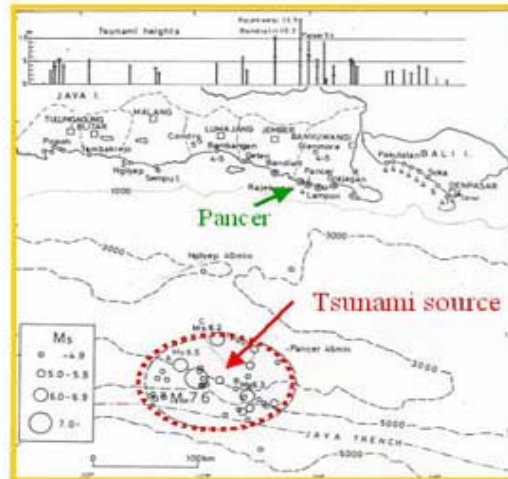
Activities Results

JAWA TIMUR (1994)

Gambar Distribusi Gempa Kejadian Gempa Dari 31-12-1993 s/d 1-1-1995 dengan Magnitude Gempa Antara 6 dan 8 pada Lintang -12° s/d -6° dan Bujur 110° - 116°.



1994 East Java Tsunami Simulation

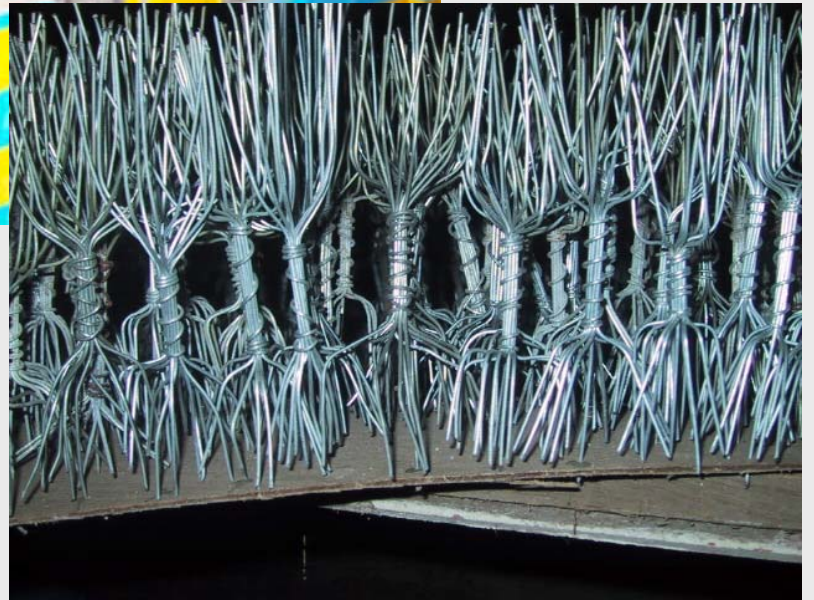


Activities Results

Physical Modeling

OBJECTIVES:

1. Investigate tsunami runup characteristics in regard with typical coastline shapes.
2. Investigate effects of mangrove damper on tsunami runup
3. Collect data for calibration of numerical model on tsunami runup on the beach



COASTLINE MODEL AND MANGROVE MODEL

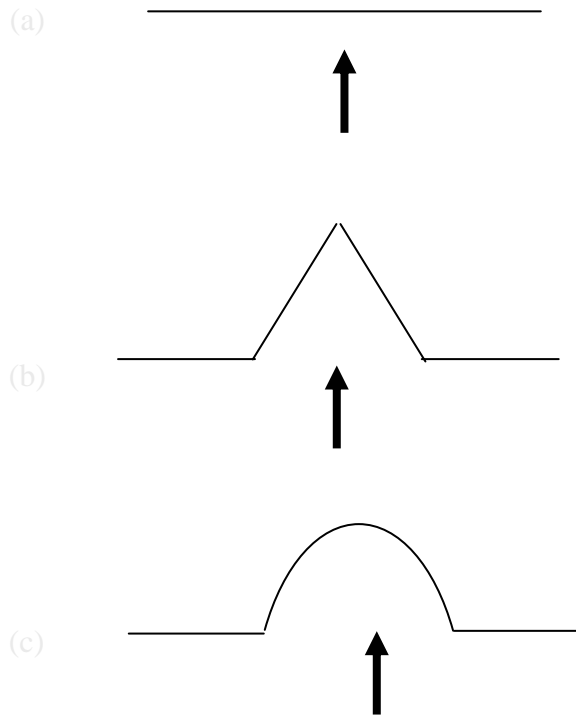


Fig-1. Typical shape of coastline model

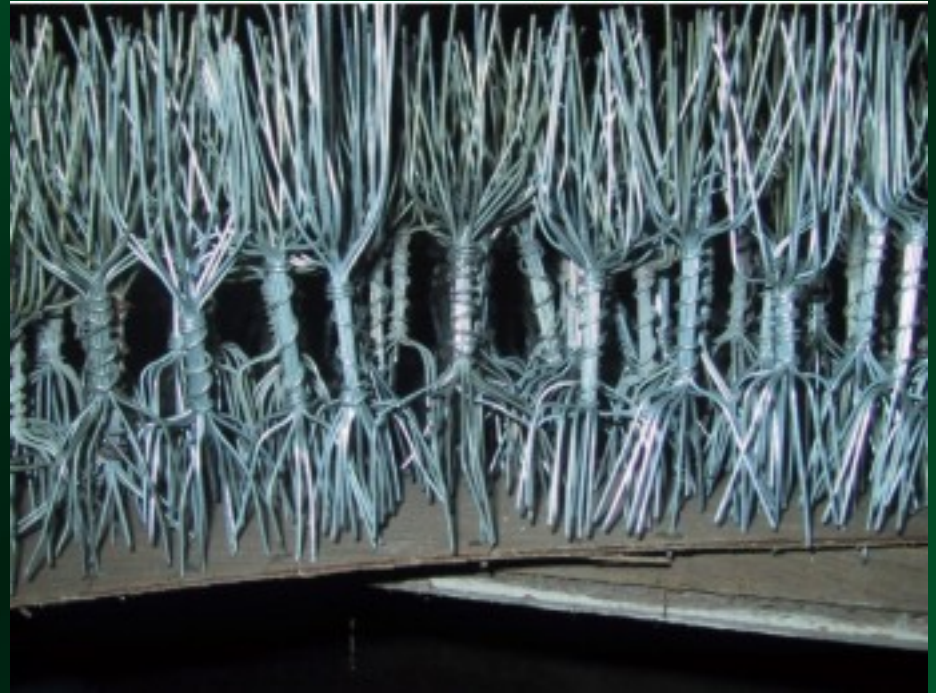
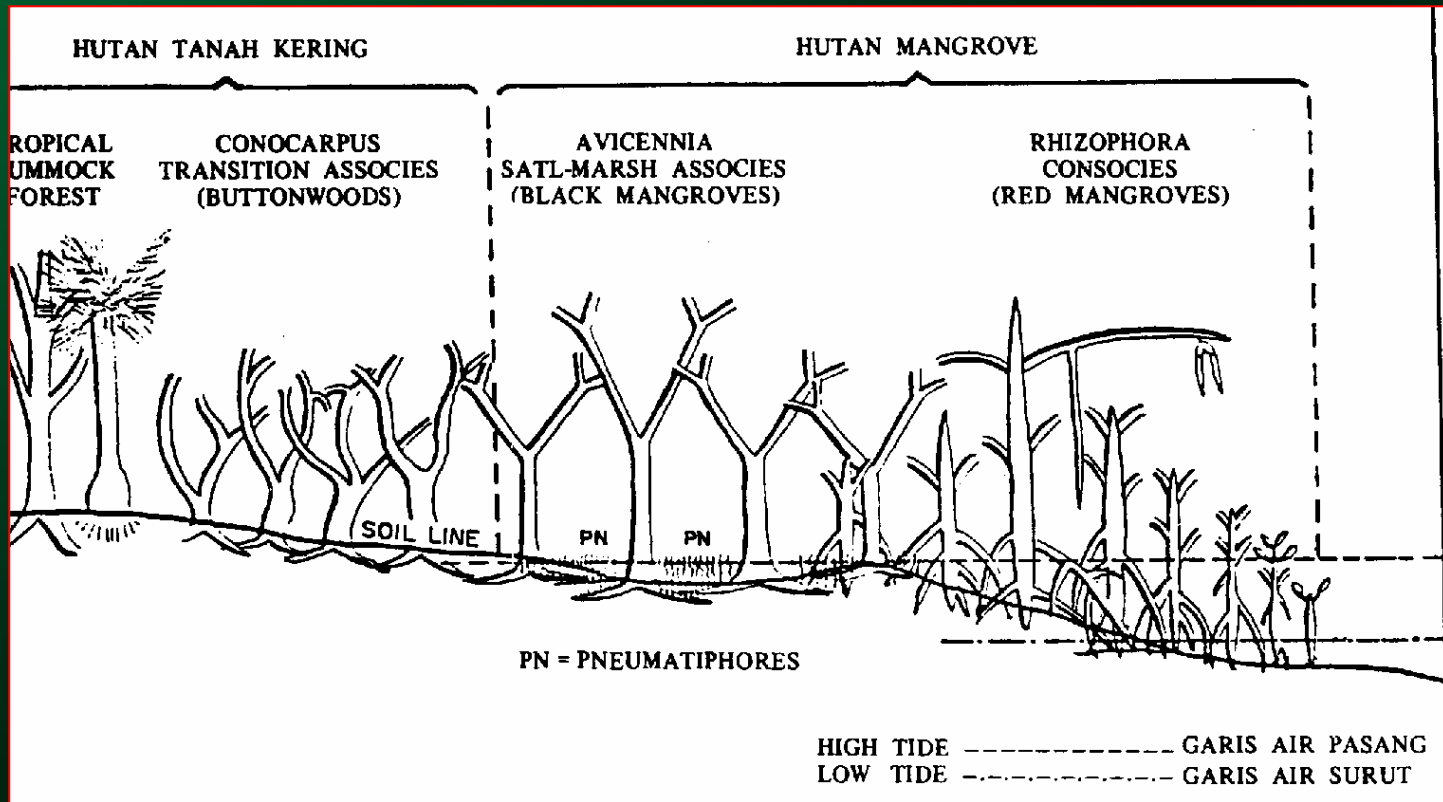


Fig-2. Model of mangrove developed for the experiment

MANGROVE ZONE PROFILE



EXPERIMENT RESULT

WITHOUT MANGROVE

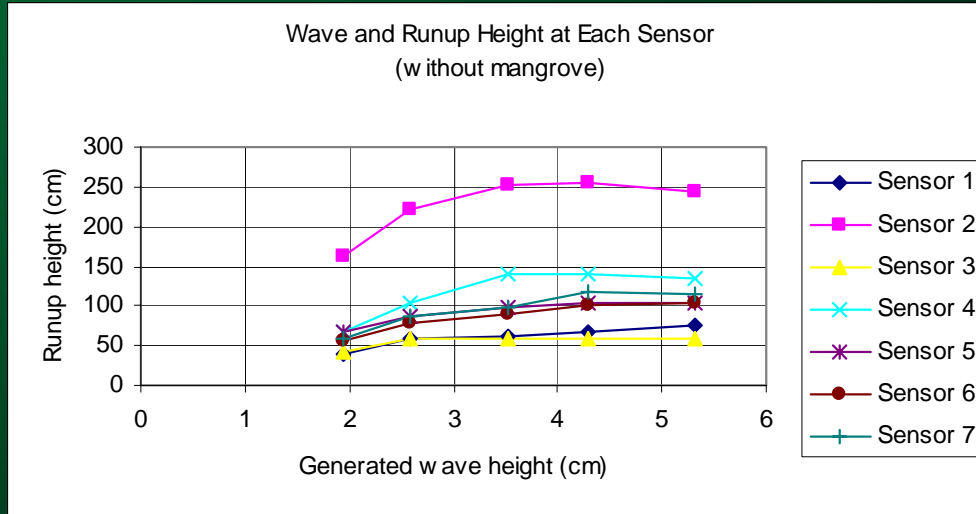
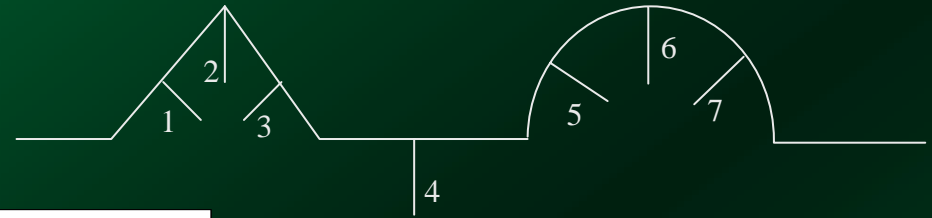


Fig-5. Runup – wave height relation, in case without mangrove

- ✔ The higher the wave height, the higher the run-up
- The highest run-up recorded at sensor #2

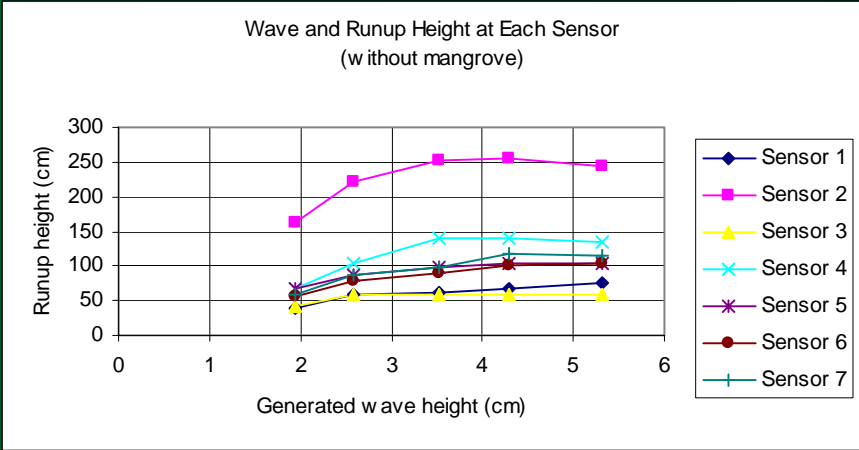
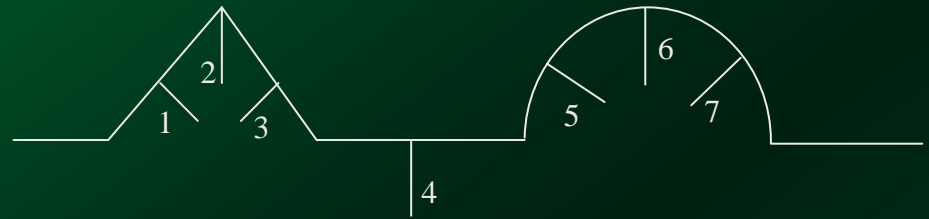


Fig-5. Runup – wave height relation, in case without mangrove

- 10 cm width reduces runup in average 2,3%
- 20 cm width reduces runup in average 5,1%

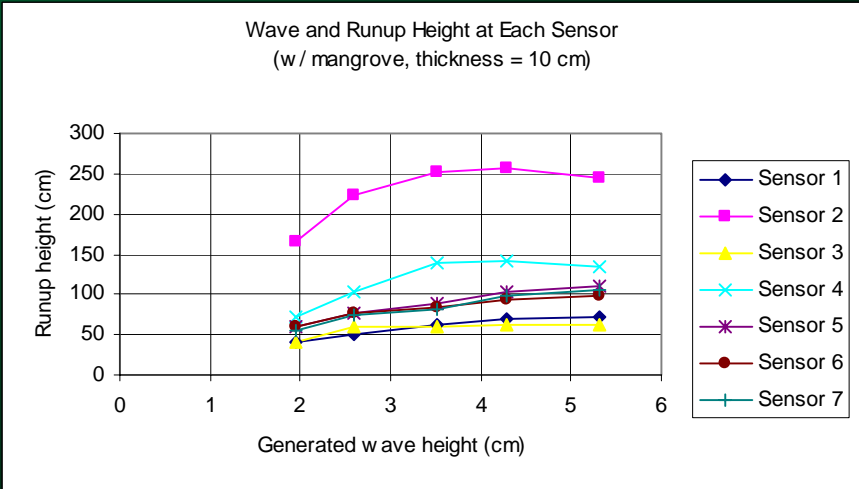


Fig-6. Runup – wave height relation, in case with mangrove of 10 cm width

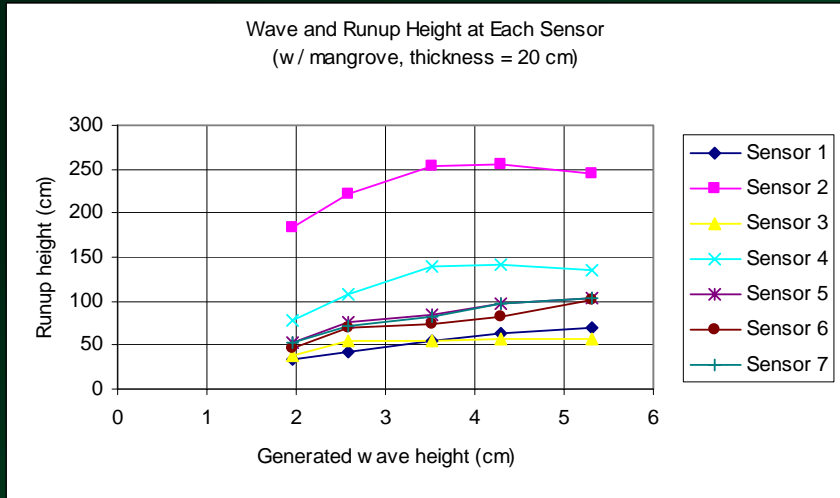
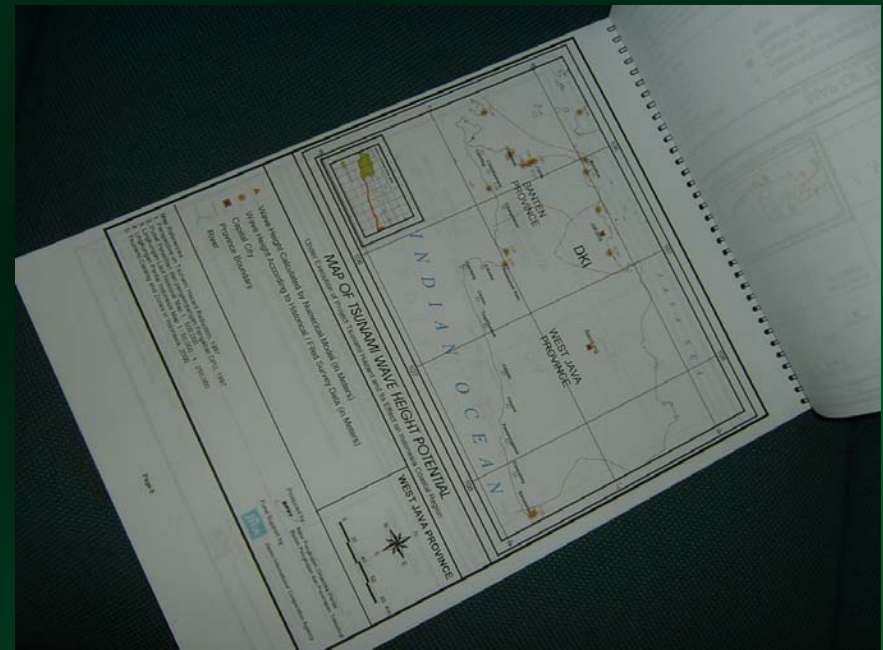


Fig-7. Runup – wave height relation, in case with mangrove of 20 cm width

1. Any typical coastline shape has specific effect on tsunami run-up on the beach
2. In general, the existence of mangrove at the beach reduce tsunami run-up
3. Mangrove elasticity had not been considered in the present research

Activities Results

Map of Tsunami Risk :



Next step

1. Develop tsunami run-up numerical model as well as physical model by including various vegetation and its characteristic
2. Make some recommendations & disseminations of the result to local government and related agencies
3. Develop national data base and network system for tsunami hazard and its mitigation