

Clarent® Gateway 1200

Capacity. Clarity. Command.

Crystal clarity, high capacity and maximum flexibility make the **Clarent Gateway 1200** the definitive answer for today's high volume Internet telephony networks.



High density, low profile

Scalable voice capacity

Multiple voice compression options

Real-time T.38 FAX, FAX relay and modem relay

Comprehensive PSTN/PTT signaling support

Extensive dialing plan options



High capacity for high traffic

The Clarent Gateway 1200 is a high capacity Internet telephony gateway that adroitly handles large volumes of voice, real-time fax and data traffic. With seamless integration and high efficiency, the Clarent Gateway 1200 delivers top tier performance and maximum flexibility to service providers. The Clarent Gateway 1200 fully interacts with the Clarent Command Center™ for across the board billing, call routing and network administration. Optional PSTN fall back availability, standards-based management support and increased router efficiency make the Clarent Gateway 1200 the product of choice for high volume Internet telephony.

Quality capacity management

Voice quality – The Clarent Gateway 1200 uses a unique combination of DSP and host-based voice processing and employs industry-standard G.168 echo cancellation for crystal clear, toll-quality voice transmission. Clarent ThroughPacket™ technology minimizes dropped or lost packets in the network and substantially increases router efficiency.

Standards-based product – Clarent Gateway 1200s support G.711, G.723.1, and G.729a codecs as well as Q.931 signaling. Gateway signaling includes support for SS7/C7, PRI-ISDN, T1, E1, and PBX connections.

Universal ports – All ports on Clarent Gateways can handle voice, real-time fax, and data traffic transparently giving service providers maximum flexibility.

Scalability – The Clarent Gateway 1200 can scale from 1 span up to 12 spans within the same housing to achieve the desired density at a given point of presence. Up to 360 ports can be active simultaneously in one gateway.

Flexibility – Service Editor, a powerful IVR toolbox, allows comprehensive customization of the voice interface.

Availability – Clarent Gateways provide an optional PSTN fall back if the IP network is unavailable. Redundant power supplies provide a high level of reliability.

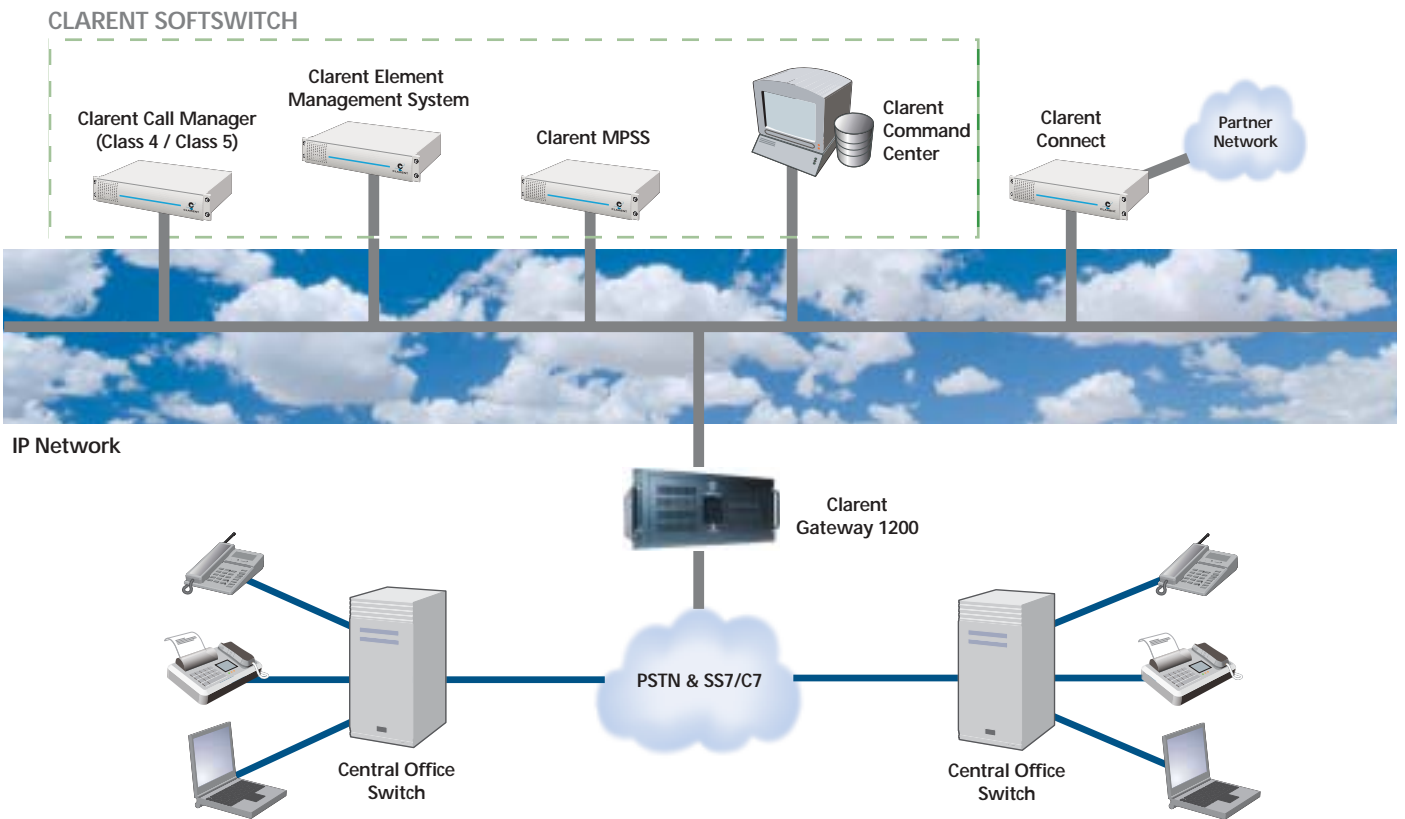
Manageable – Standards-based network management support via SNMP, MIB-II, and LanManager. Clarent products have been designed to easily integrate into telecommunications management network (TMN) environments.

Remote management – Clarent Gateways are extremely flexible and can be managed using telnet, SNMP, or Clarent Gateway Controller. Clarent Gateways support SNMP V1 with a comprehensive management information base (MIB). Service providers can set parameters, poll devices for performance statistics and status information, and receive alarms when faults occur. Each Clarent Gateway keeps log files for diagnostics. These log files can be streamed to a customer-defined IP address for centralized diagnostics analysis and troubleshooting. Network administrators can view and control gateways remotely from any Clarent Gateway Controller-enabled Windows™ NT computer, and this powerful client application allows the viewing of port statistics and the convenient remote management of ports.

Specifications



CPU Dual Intel® Pentium III® 600MHz processor with 512MB RAM	Power Supplies Dual hot-swappable, 400W 115VAC 60Hz 10A maximum, or 230VAC 50Hz 5A maximum, or -48VDC 8A maximum	Required Connections PBX or PSTN connection 10/100BaseT Ethernet connection with RJ-45 cat-5 cable
Telephony Interface Digital: T1 or E1 with RJ-48C. Optional BNC connections for 75 Ohm E1. Analog: POTS lines (RJ-11)	Alarms Temperature, fan failure, and power supply failure	Customer Supplied Optional Equipment Rack mount SVGA monitor and cable Rack mount keyboard/trackball UPS/Battery backup
Signaling Protocol SS7/C7: ITU, ANSI PRI-ISDN: USNational-2, INS 1500, EuroISDN Wink Start, MFC-R2, DID and Loop Start	Cooling 3 high-volume chassis fans, 82 CFM each	Included Software Microsoft Windows NT Server 4.0 Symantec PCAnywhere Clarent Gateway 1200 software
Ethernet Connection 10/100BaseT network interface card with RJ-45 connector	Drives 1.44MB floppy disk drive EIDE hard drive 32x CDROM EIDE drive	Other Products Required for Operation Clarent Command Center Database server (requires Oracle™ Server, MS SQL Server™, or other ODBC-compliant database)
Chassis Heavy-duty steel with locking front panel. Rack mountable (some additional equipment required). 19" W x 27" D x 8 3/4" (5u) H, weight approx. 80 lbs.	Keyboards and Mouse PS/2 keyboard and mouse. Rack mount version available.	
Environment Operating temp: 0° to 40°C Humidity: 10% to 80%	Video Industry standard SVGA connection	



www.clarent.com



CORPORATE HEADQUARTERS
700 Chesapeake Drive
Redwood City, CA 94063 USA
Tel. 1 888 CLARENT, (1 888 252 7368)
1 650 306 7511
Fax 1 650 306 7512
Email: sales@clarent.com

ASIA PACIFIC
Hong Kong
Tel. 852 2587 8862
Fax 852 2157 0388
Email: sales.hk@clarent.com

EUROPE, MIDDLE EAST, AFRICA
Milton Keynes, UK
Tel. 44 1908 306 500
Fax 44 1908 306 501
Email: sales.eu@clarent.com